

THE TOWNS AT WIRE PARK



UNLOCK
LOWER MORTGAGE
PAYMENTS

4.99%*

ON FHA LOANS WITH USE OF
PREFERRED LENDER

Interest rate based on a sales price up to \$629,300, maximum financing for FHA, with a seller contribution of \$30,000. APR is 5.535%. Rates are based on the date of 3/13/2025 and are subject to change without notice based on market conditions. This offer is based on a FICO credit score of at least 620, this offer can be used with other approved down payment assistance offers which do not conflict with the terms and conditions of those programs. If the market rates increase, the seller contribution can be applied to get the best rate offered at the time. Neither the builder/seller or Realtor has any written or verbal agreements with the lender. Lender is Total Bank and division of City National Bank of Florida. NMLS#412469



3 Bedrooms | 3.5 Bathrooms | 2-Car Garage | Courtyard Patio



**TRACIE
HEDGES**

(706) 818-4779



**JENNIFER
WESTMORELAND**

(706) 202-9953

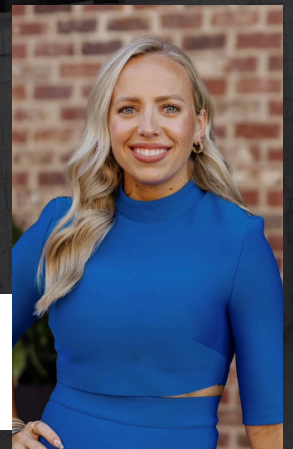
KELLYN BOWDEN

NMLS# 1770179

C. (706) 612-0011

KELLYN.BOWDEN@TOTALBANK.COM

KELLYNITHOMELOANS.COM



(706) 543-4000 | UPCHURCHREALTY.COM | THETOWNSATWIREPARK.COM

THE TOWNS AT WIRE PARK



UNLOCK
LOWER MORTGAGE
PAYMENTS

5.375%*
ON CONVENTIONAL LOANS
WITH USE OF PREFERRED LENDER

Interest rate based on a sales price up to \$629,300, maximum financing for CONVENTIONAL loan, with a seller contribution up to \$30,000. **Down payments with less than 10% of the sales price, seller contributions will be capped at 3%. Therefore, seller contributions will be less than \$30,000. For example, on a \$629,300 sales price with less than 10% down, seller contributions will be \$18,879**. APR is 5.427%. Rates are based on the date of 3/13/2025 and are subject to change without notice based on market conditions. This offer is based on a FICO credit score of at least 740, this offer can be used with other approved down payment assistance offers which do not conflict with the terms and conditions of those programs. If the market rates increase, the seller contribution can be applied to get the best rate offered at the time. Neither the builder/seller or Realtor has any written agreements with the lender. Lender is Total Bank and division of City National Bank of Florida. NMLS#412469



3 Bedrooms | 3.5 Bathrooms | 2-Car Garage | Courtyard Patio



**TRACIE
HEDGES**

(706) 818-4779



**JENNIFER
WESTMORELAND**

(706) 202-9953

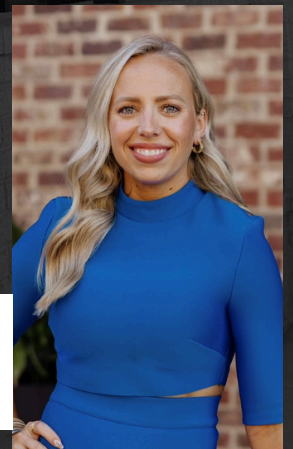
KELLYN BOWDEN

NMLS# 1770179

C. (706) 612-0011

KELLYN.BOWDEN@TOTALBANK.COM

KELLYNITHOMELOANS.COM



(706) 543-4000 | UPCHURCHREALTY.COM | THETOWNSATWIREPARK.COM